

BrickNerd Instructions



Teddy Mech

Mech Design and Instructions
by Simon Liu from BrickNerd

Mechs come in all shapes and sizes, and tiny and cute ones are some of our favorite ones at BrickNerd! Defenders against nightmares for kids around the world, the teddy bear was the inspiration of this mechanized suit.

Using a series of 1x2 rounded plates, clips and brackets, this posable mech will be ready to stand guard against all the creepy crawlies out there. The rod- arms of the teddy bear allow for quite a few connections and some rotation so they can be equipped with a variety of minifig accessories--our favorite was having the teddy bear mech play a gnarly guitar!

And one last special note: a LEGO bunny can also be used in place of the teddy bear. Enjoy! 

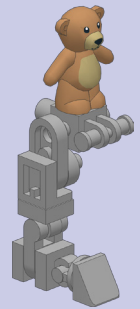
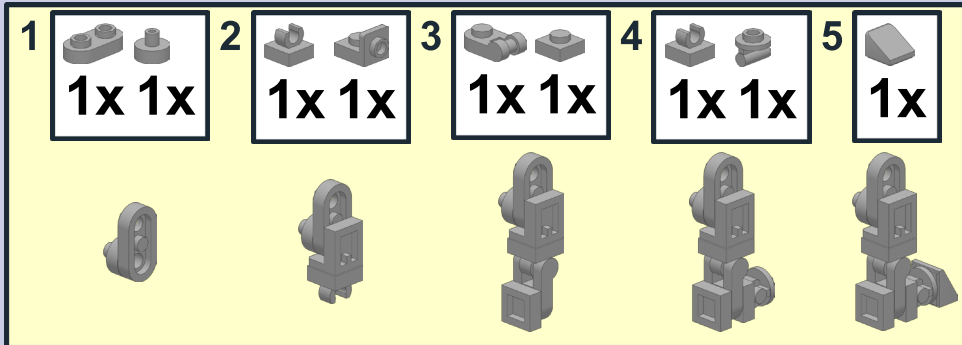
Parts List (Parts can be ordered through Bricklink.com by searching by part number and color)

Qty	Part	Color	Description
1	98382p01.dat	Medium Nougat	Minifig Teddy Bear with Arms Down with Tan Belly and Muzzle and Black Nose and Eyes Pattern
2	3024.dat	Lt Bluish Grey	Plate 1 x 1
1	3900.dat	Lt Bluish Grey	Minifig Signal Holder
6	15712.dat	Lt Bluish Grey	Tile 1 x 1 with Clip (Thick C-Clip)
3	20482.dat	Lt Bluish Grey	Tile 1 x 1 Round with Pin and Pin Hole
1	24078.dat	Lt Bluish Grey	Minifig Mechanical Cuboid Torso with Stud on Front
2	25893.dat	Lt Bluish Grey	Plate 1 x 1 Round with Horizontal Handle Below
2	26047.dat	Lt Bluish Grey	Plate 1 x 1 Round with Horizontal Handle on Side
2	30377.dat	Lt Bluish Grey	Minifig Mechanical Arm with Clips Parallel
7	35480.dat	Lt Bluish Grey	Plate 1 x 2 with Round Ends and 2 Open Studs
4	36840.dat	Lt Bluish Grey	Bracket 1 x 1 - 1 x 1 Up
2	36841.dat	Lt Bluish Grey	Bracket 1 x 1 - 1 x 1 Down
2	42446.dat	Lt Bluish Grey	Bracket 1 x 1 - 1 x 1 Thin with Stud Hole
2	54200.dat	Lt Bluish Grey	Slope Brick 31 1 x 1 x 0.667
2	60849.dat	Lt Bluish Grey	Minifig Hose Nozzle with Side String Hole Simplified
2	85861.dat	Lt Bluish Grey	Plate 1 x 1 Round with Open Stud

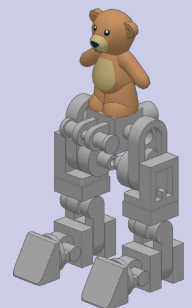
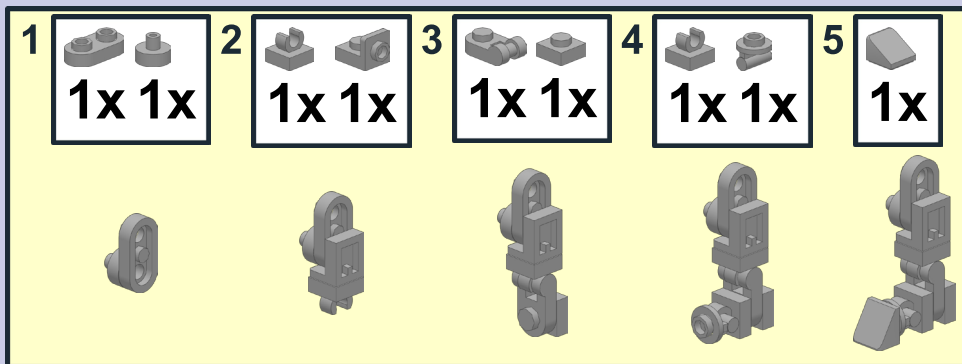
1



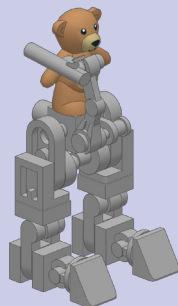
2



3

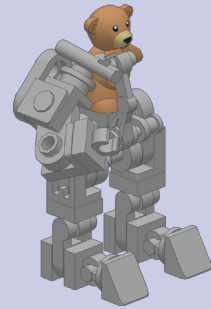
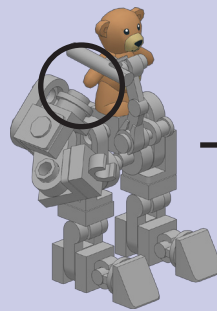
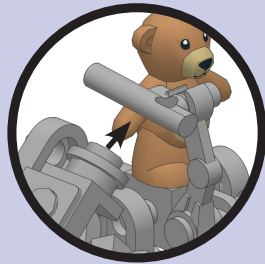


4



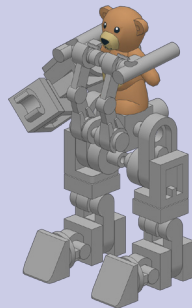
5

1	2	3	4
1x 1x	1x	1x 1x	1x 1x



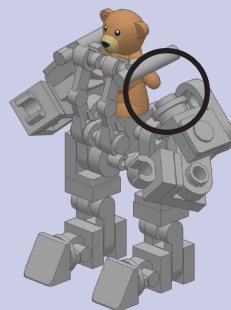
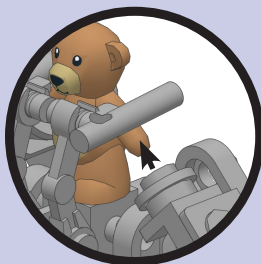
6

1x	
1x	

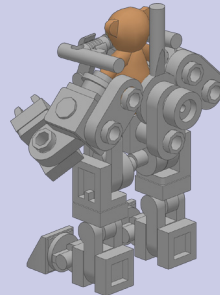
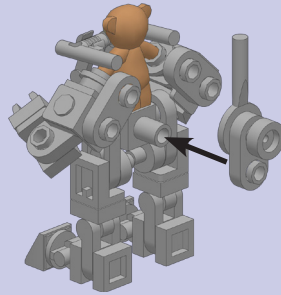
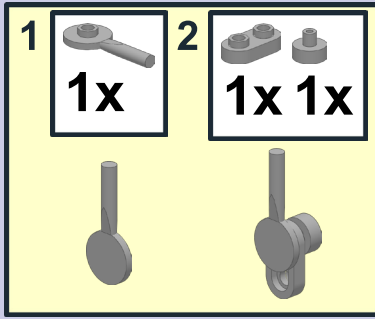


7

1	2	3	4
1x 1x	1x	1x 1x	1x 1x



8



BrickNerd is a LEGO fan website that was started by Tommy Williamson. Relunched in 2021 by Dave Schefcik and some of the best LEGO builders in the world, the site continues the mission started by Tommy: to show the best of the LEGO fan community online with builds, interviews and articles. *BrickJournal* is proud to continue its partnership with BrickNerd.



You can go to the BrickNerd website by typing: <https://bricknerd.com/> on your browser or by scanning this QR code!