

# Baby Spaceship

## Design and Instructions

by Geneva Durand from BrickNerd

Blue, light grey, and transparent yellow are a trio of colors that have stood the test of time. No three colors scream spaceship—spaceship!—SPACESHIP! more loudly to a LEGO fan.

My philosophy is that anything that's cool in minifigure scale must be even better in baby scale! Baby scale is a half-micro, half-chibi scale I've come up with to build things like castles, boats, and airplanes for LEGO babies to ride. This "Baby Build" version of the classic LEGO spaceship is one of mini models included in my LEGO Ideas project, which you can find by searching Baby Builds on LEGO Ideas.

One kind of old-fashioned piece that I tried to use in an unusual way was the blue tile 1x2 modified with bar handle on the back of the spaceship. This is a piece with some interesting geometry, and it fits well sideways over two studs.

In the front of the spaceship there is a plate 1x2 modified with bar handles—an old part that really helps evoke classic space vibes.

This was a fun little build to create, and I hope you have as much fun building it. And yes, it is swooshable!

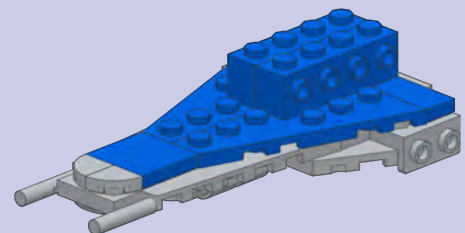
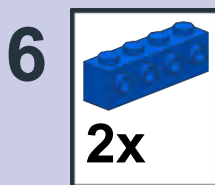
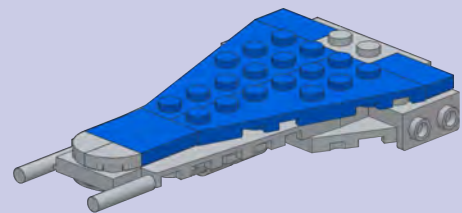
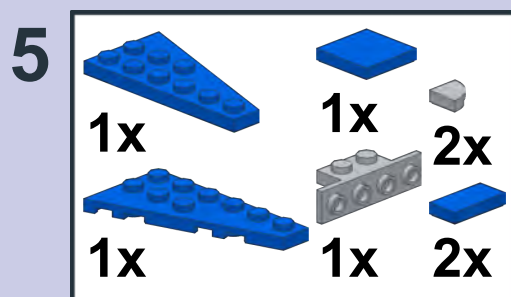
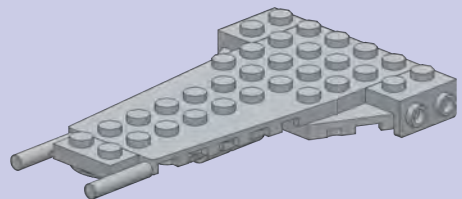
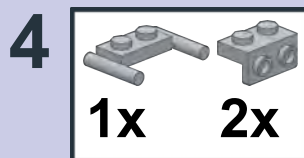
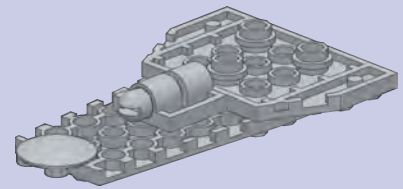
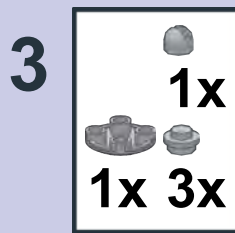
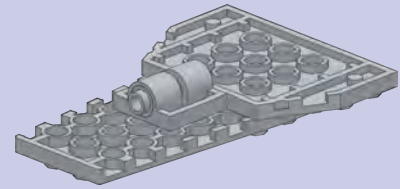
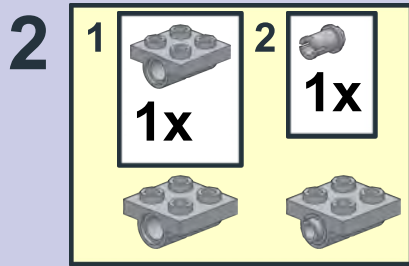
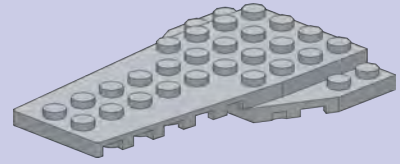
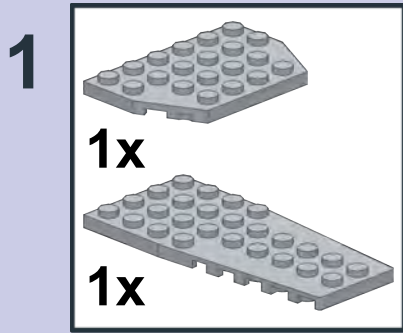


You can go to the BrickNerd website by typing: <https://bricknerd.com/> on your browser or by scanning this QR code!

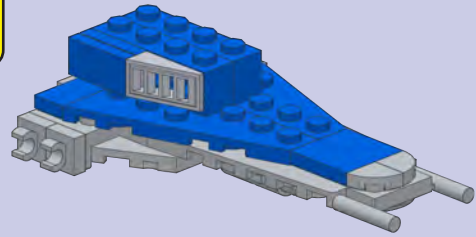
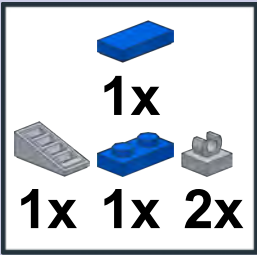
BrickNerd was a LEGO fan website that was started by Tommy Williamson. Relaunched in 2021 by Dave Schefcik and some of the best LEGO builders in the world, the site continues the mission started by Tommy: to show the best of the LEGO fan community online with builds, interviews and articles. *BrickJournal* is proud to continue its partnership with BrickNerd.

## Parts List (Parts can be ordered through Bricklink.com by searching by part number and color)

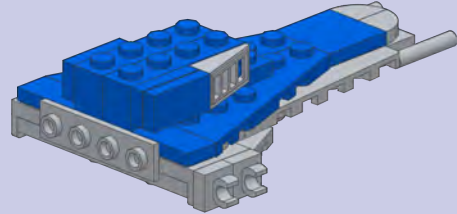
Qty	Part	Color	Description
1	25126p01.dat	White	Minifig Baby Body with Yellow Hands Pattern
1	3069b.dat	Trans Yellow	Tile 1 x 2 with Groove
1	30602.dat	Trans Yellow	Slope Brick Curved Top 2 x 2 x 1
1	24581p01.dat	Yellow	Minifig Baby Head with Eyes and Smile Pattern
1	2436a.dat	Lt Bluish Grey	Bracket 1 x 2 - 1 x 4 with Square Corners
1	2654a.dat	Lt Bluish Grey	Dish 2 x 2 with Rim
1	2817.dat	Lt Bluish Grey	Plate 2 x 2 with Holes
1	3839b.dat	Lt Bluish Grey	Plate 1 x 2 with Handles Type 2
3	4274.dat	Lt Bluish Grey	Technic Pin 1/2
1	4592.dat	Lt Bluish Grey	Hinge Control Stick Base
3	6141.dat	Lt Bluish Grey	Plate 1 x 1 Round
1	14181.dat	Lt Bluish Grey	Wing 4 x 9 with Stud Notches
2	15535.dat	Lt Bluish Grey	Tile 2 x 2 Round with Hole
4	15712.dat	Lt Bluish Grey	Tile 1 x 1 with Clip (Thick C-Clip)
2	25269.dat	Lt Bluish Grey	Tile 1 x 1 Corner Round
1	32059.dat	Lt Bluish Grey	Plate 4 x 6 without Corners
2	59900.dat	Lt Bluish Grey	Cone 1 x 1 with Stop
2	61184.dat	Lt Bluish Grey	Technic Pin 1/2 with Bar 2L
2	98100.dat	Lt Bluish Grey	Cone 2 x 2 Truncated
2	98138.dat	Lt Bluish Grey	Tile 1 x 1 Round with Groove
2	99781.dat	Lt Bluish Grey	Bracket 1 x 2 - 1 x 2 Down
1	2432.dat	Blue	Tile 1 x 2 with Handle
4	3023.dat	Blue	Plate 1 x 2
2	3068b.dat	Blue	Tile 2 x 2 with Groove
4	3069b.dat	Blue	Tile 1 x 2 with Groove
1	15573.dat	Blue	Plate 1 x 2 with Groove with 1 Centre Stud, without Understud
1	16599.dat	Blue	Minifig Helmet Classic with Cracked Thin Chin Guard
2	30414.dat	Blue	Brick 1 x 4 with Studs on Side
1	54383.dat	Blue	Wing 3 x 6 Right
1	54384.dat	Blue	Wing 3 x 6 Left
2	61409.dat	Metallic Silver	Slope Brick 18 2 x 1 x 0.667 Grille



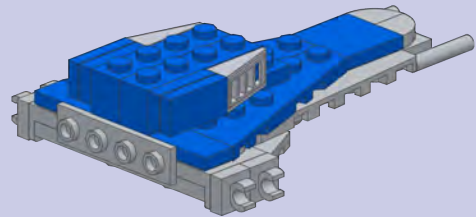
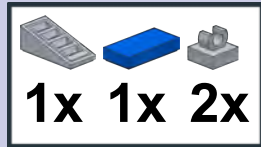
7



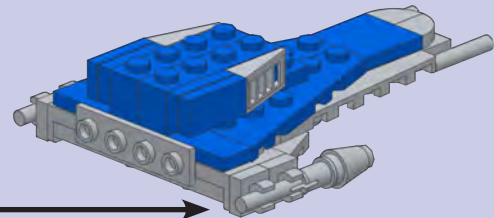
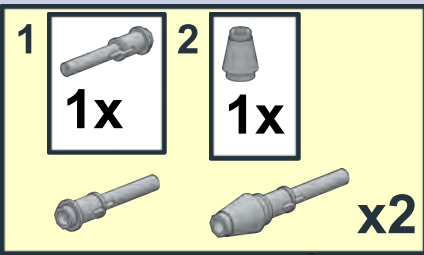
8



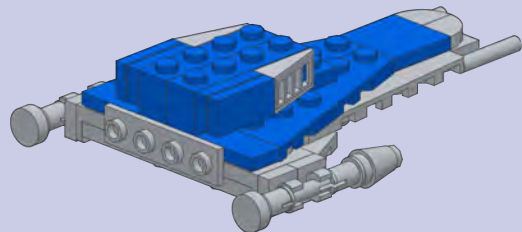
9



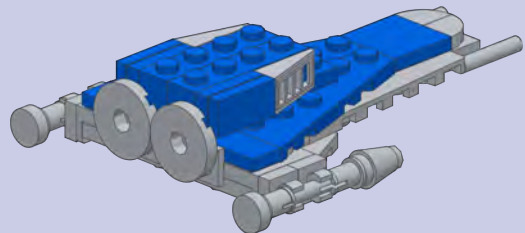
10




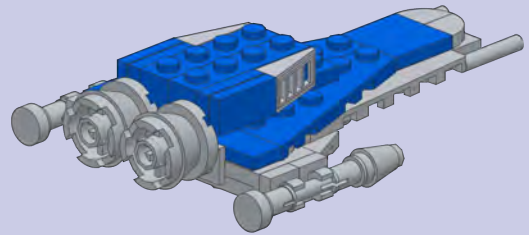
11

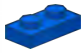
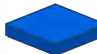
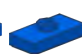


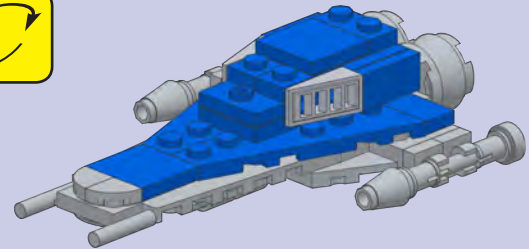
12


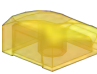
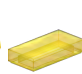


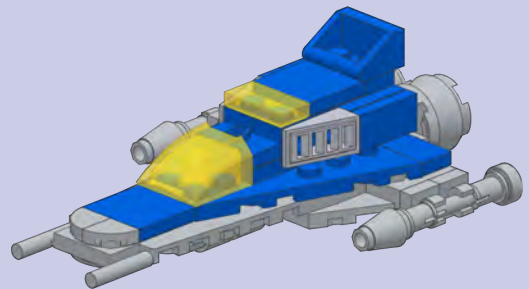
13   
2x






14   
1x  
   
1x 1x



15   
1x  
   
1x 1x



16 

1	  1x 1x	2	 1x
	